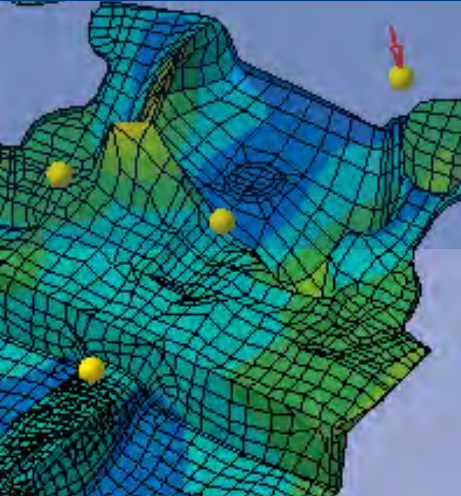


LMS Virtual.Lab Noise and Vibration



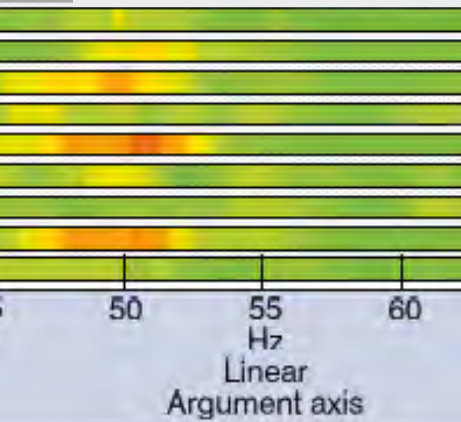
Course objective

This training course will introduce you to the basic operations of LMS Virtual.Lab and how to use LMS Virtual.Lab in the context of structural dynamics.

You will learn how to predict structural responses using modal models obtained with Finite Element techniques or Experimental Modal Analysis and/or frequency response functions. We will guide you through the assembly of a global dynamic model from component models. You will also be introduced to the concepts of Transfer Path Analysis and you will learn how to drive MSC Nastran.

Training content

- LMS Virtual.Lab Desktop
- CAE interfaces to LMS Virtual.Lab
- LMS Virtual.Lab Noise and Vibration
 - LMS Virtual.Lab Analysis Applications
 - Noise and Vibration Solvers
 - NVH System Synthesis Solver
 - Advanced Processing
 - Load Identification Analysis
 - Path and Modal Contribution analysis
 - Modification Prediction
- LMS Virtual.Lab Structures
 - Mesh Based Design
 - Connection Modeling
 - Assembly
 - MSC Nastran analysis driver
- Exercises



Who should attend?

New users of LMS Virtual.Lab who need to learn both the product and application and managers who want to get an overview of the state-of-the-art techniques to build meshes for acoustics.

A general understanding of acoustic prediction calculations is recommended for this course.